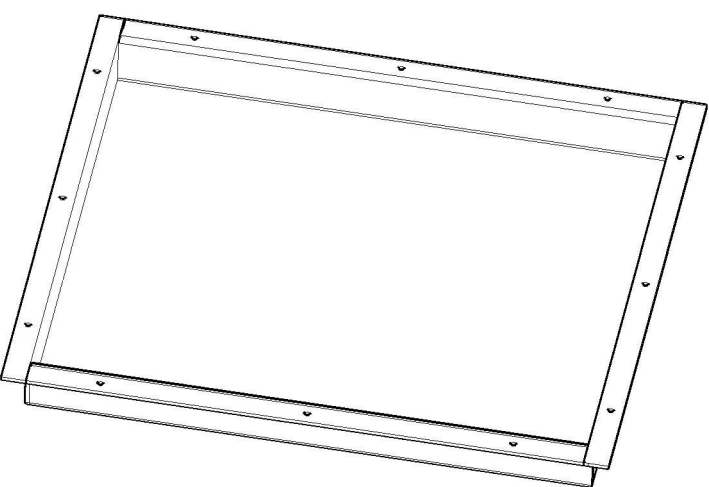
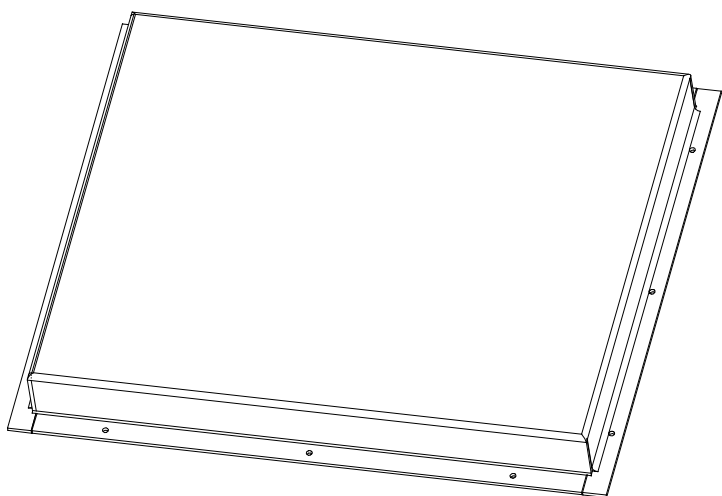
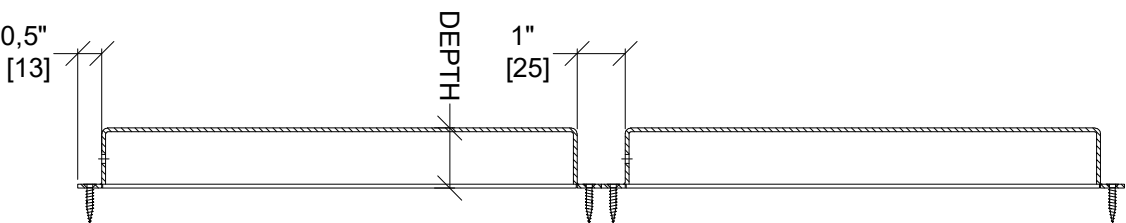
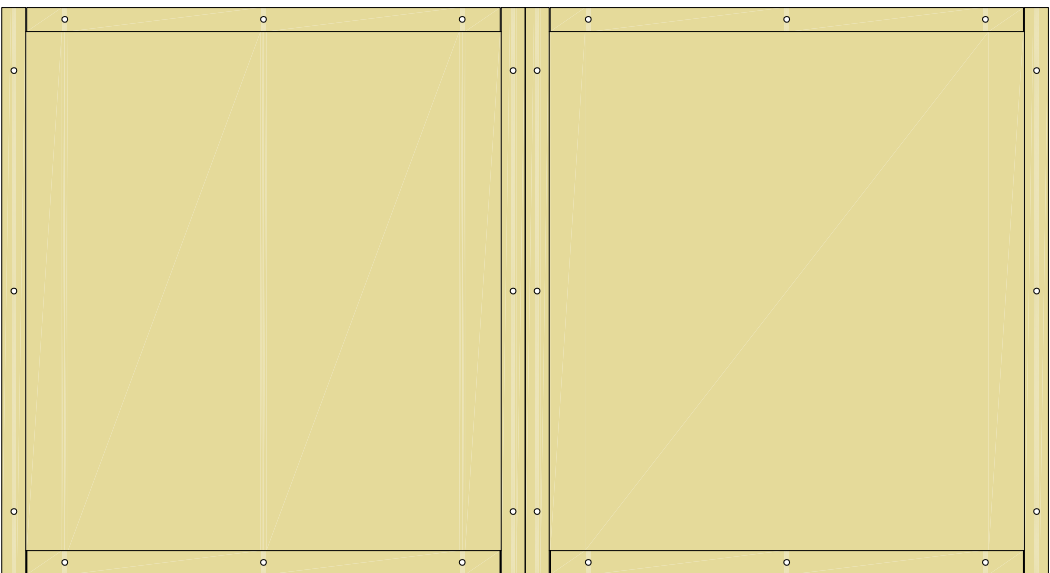


CYR 300



Boxed panel folded 4 sides.
Aluminum 2mm[0.08"] & 3.2mm[0.125"]
(3003-H14 for painting & 5005-H34 for anodizing).
Spacing between panels 25mm[1"] or 19mm[3/4"].
Visible screwing.
Manufacturing of panels of regular & special forms.
Several finishes available: natural, anodizing, powder or liquid paint.
Variable depth.



1101 Rue Louis-Marchand
Beloeil, Qc, J3G 6S4
450-467-2434
www.cyrell.qc.ca

TITRE:

CYR 300 - TYPICAL DETAIL

NO.:

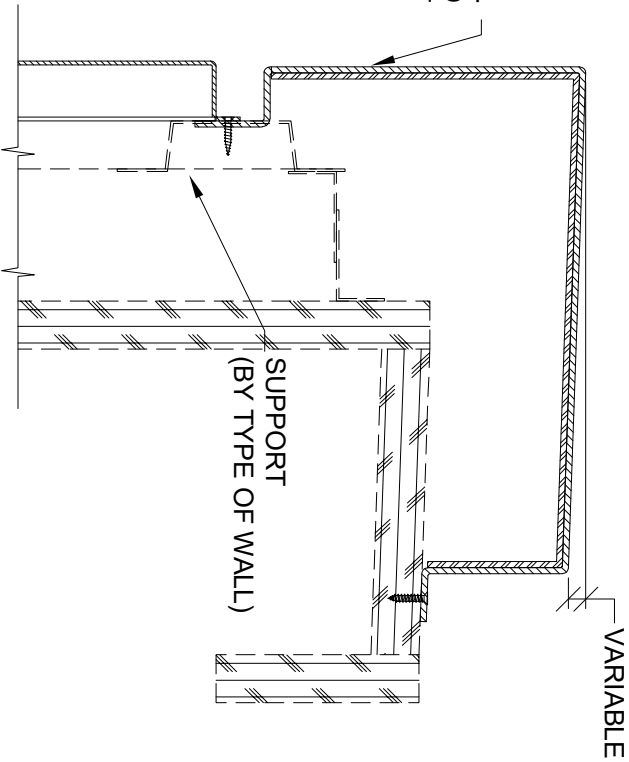
INSTALLATION GUIDE - TECHNICAL DETAILS

1/2

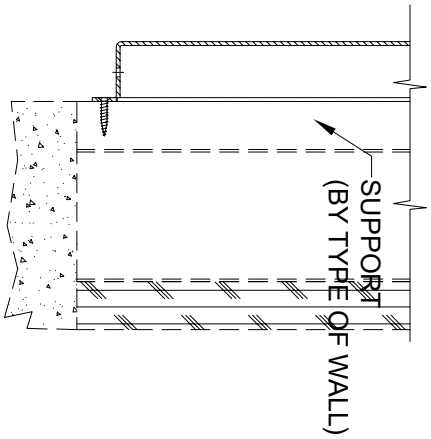
PROJET:

THIS DRAWING IS CONFIDENTIAL AND MUST NOT BE REPRODUCED OR USED WITHOUT THE WRITTEN CONSENT OF CYRELL AMP

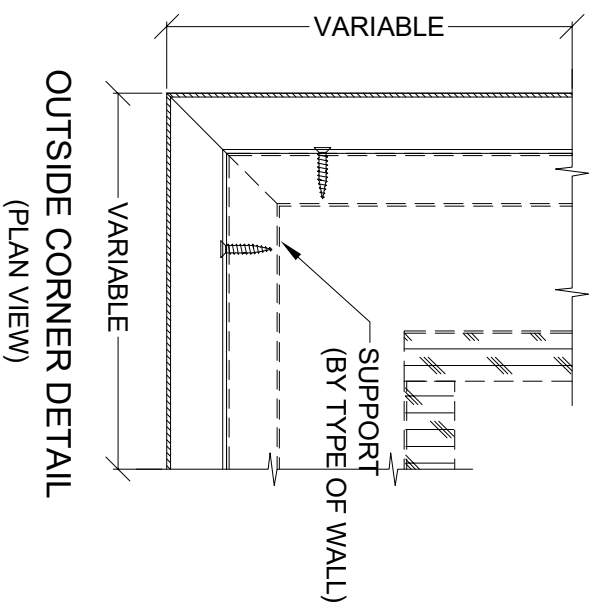
PARAPET 120 Lg.
WITH SEAL TO
COVER THE JOINT



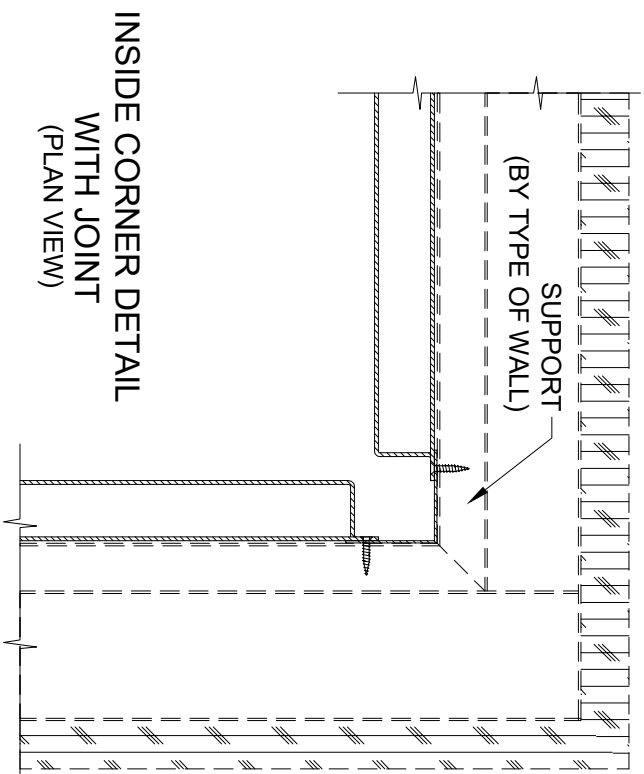
PARAPET DETAIL
(ELEVATION VIEW)



STARTING PANEL DETAIL
(ELEVATION VIEW)



OUTSIDE CORNER DETAIL
(PLAN VIEW)



INSIDE CORNER DETAIL
WITH JOINT
(PLAN VIEW)

1101 Rue Louis-Marchand

Belleil, Qc, J3G 6S4

450-467-2434

www.cyrell.qc.ca



TITRE:

CYR 300 - TYPICAL DETAIL

NO.:

INSTALLATION GUIDE - TECHNICAL DETAILS

2/2

PROJET:

THIS DRAWING IS CONFIDENTIAL AND MUST NOT BE REPRODUCED OR USED WITHOUT THE WRITTEN CONSENT OF CYRELL AMP